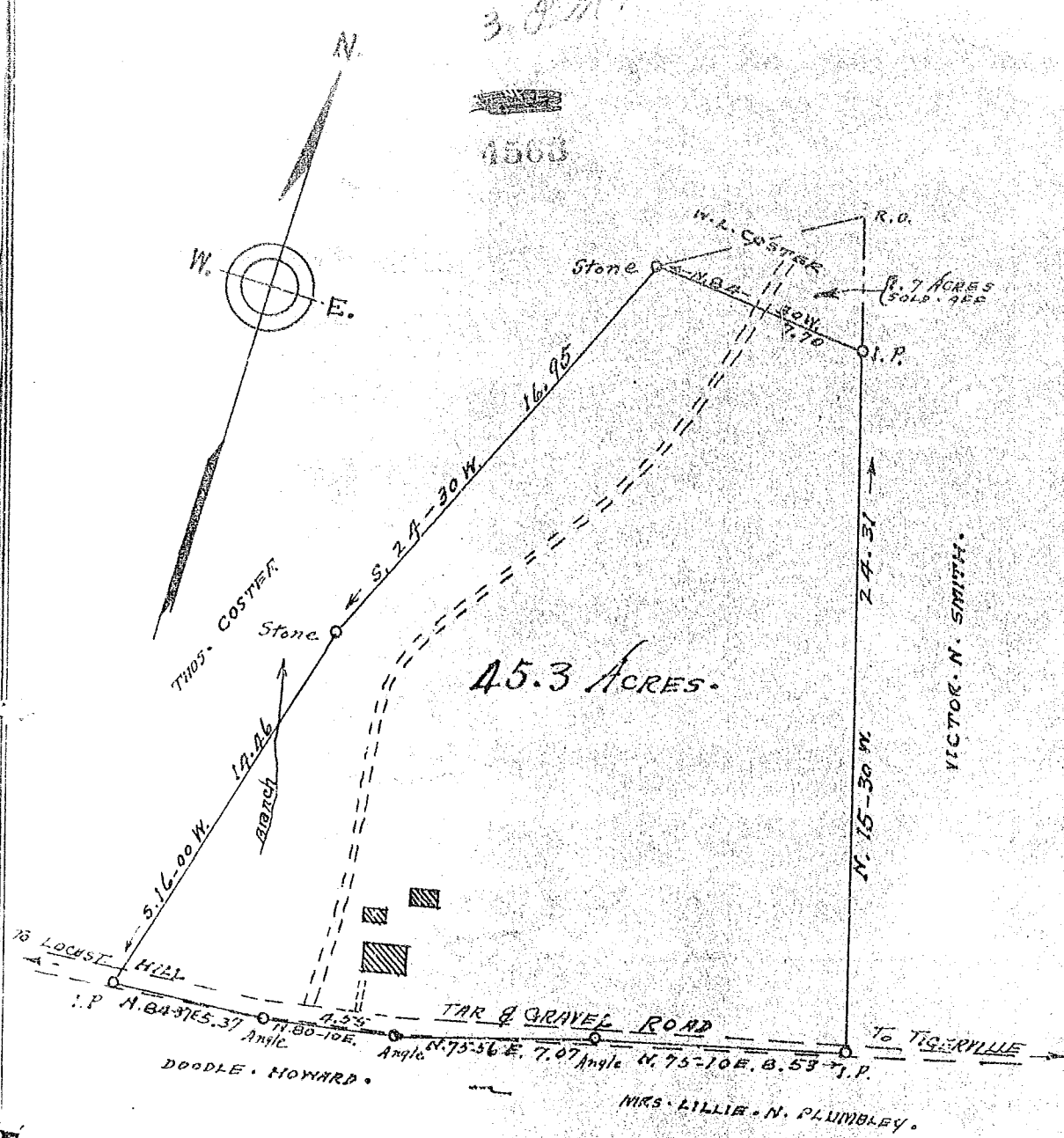


3 P.M.

4563



PROPERTY OF  
 MRS. VIOLA P. BUTLER.

HIGHLAND TOWNSHIP. GREENVILLE COUNTY.  
 SOUTH CAROLINA.

SCALE: 1" = 5 CHAINS. JANUARY 10 1934.

PLATTED FROM ANOTHER PLAT MADE BY B.F. NEVES, SURVEYOR, AUG. 17. 1922, AND FROM SURVEY BY ME JAN. 9. 1934.

15 Day of April 1934 H. S. BROCKMAN, SURVEYOR, GREENVILLE, S.C.  
 L Page 175 of 3 P.M.  
 Ollie Jarnsworth